



Coil extension cables & short charging leads for SD/GP

ba-cl22, Charger lead for 2200
ba-cl21, Charger lead for 2000,
 2100, generic batteries
cl-mcx, Coil ext. cable for
 Mono coil all SD and GP
cl-dcx, Coil ext. cable for DD
 coil for SD 2200 & GP
cl-dcxp, Coil ext. cable for
Explorer coils

Aussie Swing Arm
ac-sa
 Imported from Australia

Unique design makes this superior to homestead styles. Hand clip to shaft when not in use.

Makes any detector feel like it's half the weight! Works on detectors with round shaft only.



Coiltek Power Cords
for SD & GP's

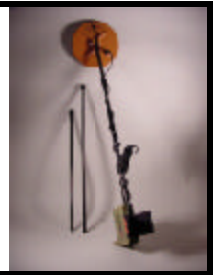
Twice as thick as the one that came with your Minelab.

ba-pc, Curly cord
ba-pcs, Straight power cord

Fiberglass Shaft for SD/GP
ac-fso
 Complete fiberglass rod from top to bottom. Strong simply switch your arm cuff, hand and bungee knuckle over. Lite weight! Imported from Australia. Comes with long lower rod.

ac-lro
 Heavy Duty lower rod for all coils & shafts; 24 inches

ac-lrol
 Heavy Duty lower rod LONG! 28 inches



Coil Covers
for COILTEK & Minelab
plus coil cover tape

See Price Sheet for a full selection of various cover sizes

Super Magnets
ac-sm

Rare Earth, the strongest kind! Be exceptionally careful when handling these as they will literally jump towards metal and could pinch you!
 1/4 X 1 inch disk.



COILTEK Neoprene Covers
ac-csd
 Neoprene cover for SD with integrated arm strap. Easily stretches over Signal Enhancers, and protects your machine from bumps and scratches. Green only to match SD.

ac-cgp
 Neoprene cover for GP. Works perfect with Minelab supplied arm cuff cover and strap. Easily stretches over Signal Enhancers, and protects your machine from bumps and scratches. BLUE only to match GP.

Authentic Kangaroo Scrotum Gold Pouch
ac-kp
 Imported from Australia

Nose ams, Large size

* These items harvested under license from the Australian Government.



REAL Shearling Arm Cuff
ac-acn

Padded arm cuff for GP and SD's that have an arm strap that snaps onto the metal arm cuff.

This is made from REAL Lamb Shearling and is so comfortable!

DOC'S DeTacc Signal Amplifiers
 These amp are from Australia

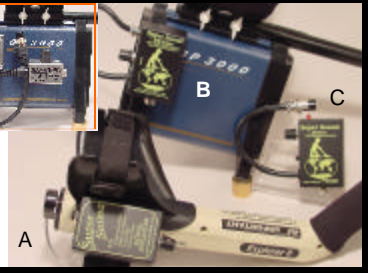
DOC's specifications, amplifies sound up to 4 times

A. **ac-seb** * made to Doc's specifications, this Super Sound amp works on ANY detector. Uses a 9 volt battery. Has a volume control and on and off switch.

B. **ac-sec** * DOC's favorite! Super Sound Amp for SD and GP. Needs no battery, works off of SD/GP powers supply. Hear those faint targets clearly! Simple design, has only a volume control.

C. **ac-see** * Super Sound Amp for SD and GP. Needs no battery, works off of SD/GP powers supply. Hear those faint targets clearly! Has by-pass switch so you can compare signal with or without amplification, low Minelab battery indicator led, and volume control.

D. **cl-ca** * **COILTEK** amp for SDGP - good for moderate hearing loss.



Complete Line of Detector Pro Headphones
at 10% off! also KOSS

ac-qz5
KOSS Noise reduction headphones. Fits under most hats!

Detector Pro Headphones • See price list. **Black Widows, Rattlers, Gray Ghosts:** Originals, NDT, Ultimate, Deep Woods. **Nugget Busters;** Regular and NDT. **Jolly Rogers,** Regular and Ultimates.

A. **ob-1000** * outside 4 3/8 x 2 7/8 x 1 3/8
 B. **ob-2500** * outside 6 1/2 x 3 7/8 x 3 3/8
 C. **ob-3500** * outside 8 3/8 x 4 3/8 x 4
 D. **ob-2000** * outside 6 1/2 x 3 7/8 x 1 5/8
 E. **ob-3000** * outside 8 3/8 x 4 3/8 x 1 7/8
 F. **ob-8000** * outside 3 X 3 3/4 x 5 3/4, includes belt clip
 G. **ob-9000** * outside 3 x 3 3/4 x 7 1/2, includes belt clip
 H. **ob-5000** * outside 8.1 x 9.9 x 4.875
 I. **ob-5010** * same as above with foam
 J. **ob-5500** * outside 8.1 x 9.9 x 6.875
 K. **ob-5510** * same as above with foam
 L. **ob-6000** * not pictured - BLACK Only - briefcase size, 11 x 12.75 x 4.75
 M. **ob-6500** * not pictured - BLACK Only - thick camera case size, 11 x 12.75 x 6.75

